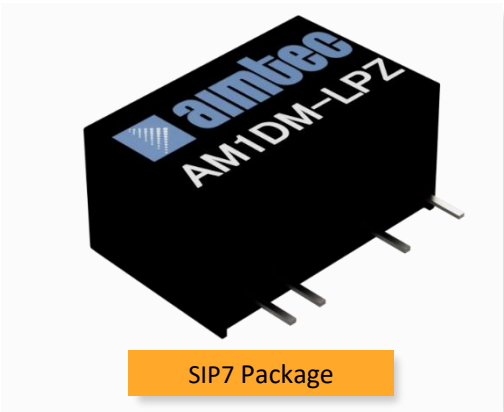


Click to
ORDER
samples

AM1DM-LPZ



The AM1DM-LPZ is a 1W SIP7 DC/DC converter that offers great cost savings thanks to an improved manufacturing process. It also features excellent reliability and performance while offering a standard input voltage range of 5-24VDC as well as an output voltage of -15 to 24V. This compact SIP7 design will surely benefit your new system design.

This new series offers great operating temperatures, from -40 to 105°C with full power up to 85°C. Also, an isolation of 4200VAC or 6000VDC for improved reliability and system safety as well as a great 19,360,000h MTBF come standard.

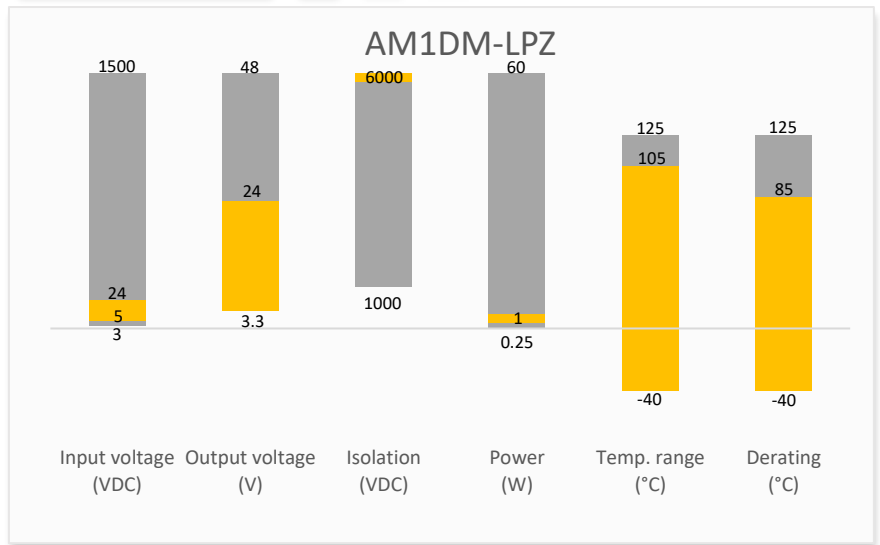
The AM1DM-LPZ is suitable for many applications such as medical collection isolation, high voltage collection circuits, and IGBT drive circuits.

Features


- High I/O Isolation of 4200VAC or 6000VDC
- Continuous Short circuit protection
- Operating Temp: -40 °C to +105 °C
- Industry standard SIP7 pin-out
- Efficiency up to 81%
- Unregulated output
- Leakage current < 2µA
- Designed to meet UL/EN/ES 60601-1, EN/IEC 62368-1




Summary



Training




Product Training Video
(click to open)




Press Release

Coming Soon!


Applications




Industrial



Portable Equipment



Medical



IoT

Models & Specifications



Single Output

Model	Input Voltage (VDC)	Output Voltage (VDC)	Input Current Full No load typ. (mA)	Output Current max min (mA)*	Isolation (VDC)	Maximum capacitive Load (μF)	Efficiency Typ. (%)
AM1DM-0505SH60LPZ	5 (4.5-5.5)	5	274 / 35	200 / 4	6000	220	79
AM1DM-0509SH60LPZ	5 (4.5-5.5)	9	274 / 35	111 / 4	6000	220	79
AM1DM-0512SH60LPZ	5 (4.5-5.5)	12	274 / 35	84 / 2	6000	220	80
AM1DM-0515SH60LPZ	5 (4.5-5.5)	15	274 / 35	67 / 2	6000	220	81
AM1DM-1205SH60LPZ	12 (10.8-13.2)	5	114 / 15	200 / 4	6000	220	79
AM1DM-1212SH60LPZ	12 (10.8-13.2)	12	114 / 15	84 / 2	6000	220	81
AM1DM-1215SH60LPZ	12 (10.8-13.2)	15	114 / 15	67 / 2	6000	220	79
AM1DM-1505SH60LPZ	15 (13.5-16.5)	5	93 / 18	200 / 20	6000	220	79
AM1DM-2405SH60LPZ	24 (21.6-26.4)	5	56 / 10	200 / 4	6000	220	76
AM1DM-2412SH60LPZ	24 (21.6-26.4)	12	56 / 10	84 / 2	6000	220	79
AM1DM-2415SH60LPZ	24 (21.6-26.4)	15	56 / 10	67 / 2	6000	220	79
AM1DM-2424SH60LPZ	24 (21.6-26.4)	24	56 / 10	42 / 4	6000	220	76

* Performance will be degraded if the load is not within the output current range.

Dual Output

Model	Input Voltage (VDC)	Output Voltage (VDC)	Input Current Full No load typ. (mA)	Output Current max min (mA)*	Isolation (VDC)	Maximum capacitive Load (μF)	Efficiency Typ. (%)
AM1DM-0505DH60LPZ	5 (4.5-5.5)	±5	274 / 35	±100 / ±2	6000	100	79
AM1DM-0509DH60LPZ	5 (4.5-5.5)	±9	274 / 35	±55 / ±1	6000	100	79
AM1DM-0512DH60LPZ	5 (4.5-5.5)	±12	274 / 35	±40 / ±1	6000	100	81
AM1DM-0515DH60LPZ	5 (4.5-5.5)	±15	274 / 35	±35 / ±1	6000	100	81
AM1DM-1205DH60LPZ	12 (10.8-13.2)	±5	114 / 15	±100 / ±2	6000	100	79
AM1DM-1212DH60LPZ	12 (10.8-13.2)	±12	114 / 15	±40 / ±1	6000	100	81
AM1DM-1215DH60LPZ	12 (10.8-13.2)	±15	114 / 15	±35 / ±1	6000	100	81
AM1DM-1505DH60LPZ	15 (13.5-16.5)	±5	93 / 18	±100 / ±10	6000	100	77
AM1DM-1515DH60LPZ	15 (13.5-16.5)	±15	93 / 18	±33 / ±4	6000	100	79
AM1DM-2405DH60LPZ	24 (21.6-26.4)	±5	56 / 10	±100 / ±2	6000	100	75
AM1DM-2412DH60LPZ	24 (21.6-26.4)	±12	56 / 10	±40 / ±1	6000	100	76
AM1DM-2415DH60LPZ	24 (21.6-26.4)	±15	56 / 10	±35 / ±1	6000	100	76

* Performance will be degraded if the load is not within the output current range.

Input Specification

Parameters	Conditions	Typical	Maximum	Units
Filter	Capacitor			
Absolute maximum rating	Maximum duration 1s, 5Vin	> -0.7	9	VDC
	Maximum duration 1s, 12Vin	> -0.7	18	VDC
	Maximum duration 1s, 15Vin	> -0.7	21	VDC
	Maximum duration 1s, 24Vin	> -0.7	30	VDC
Input reflected ripple current		15		mA
Hot Plug	Unavailable			

Isolation Specification				
Parameters	Conditions	Typical	Maximum	Units
Tested I/O voltage	60 sec, leakage \leq 1mA	4200		VAC
		6000		VDC
Patient leakage current	250VAC, 50/60Hz		2	μ A
Resistance	500VDC	>1000		M Ω
Capacitance	100kHz/0.1V	4		pF

Output Specification				
Parameters	Conditions	Typical	Maximum	Units
Voltage accuracy		See output voltage tolerance		
Line regulation	Per 1% Vin change		1.5	%
Load regulation	10-100% load, 3.3V/5V output models		20	%
	10-100% load, other output models		15	%
Ripple & Noise*		100	150	mV p-p
Temperature coefficient	100% full load	\pm 0.02		%/°C

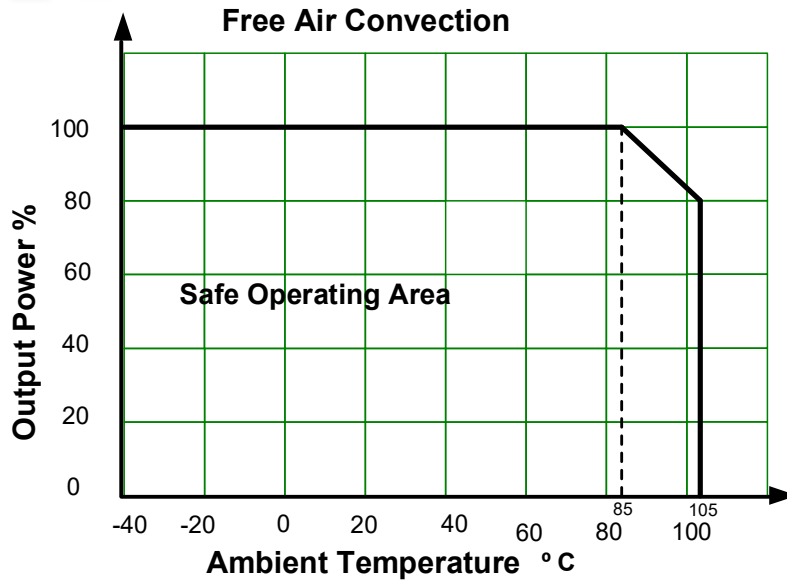
* Ripple and Noise are measured at 20MHz bandwidth. Please refer to the application note for specific details.

General Specifications				
Parameters	Conditions	Typical	Maximum	Units
Switching frequency	100% load, nominal input voltage	220		KHz
Short circuit protection	Continuous, Auto recovery			
Operating temperature	Derating when operating temperature \geq 85°C	-40 to +105		°C
Storage temperature		-55 to +125		°C
Case temperature rise	Ta = 25°C	25		°C
Manual soldering temperature	1.5mm away from case, duration \leq 10sec		300	°C
Cooling	Free air convection			
Humidity	Non-condensing	>5	95	% RH
Vibration	10-150Hz, 5G, 0.75mm along X, Y and Z			
Case material	Black plastic (flammability to UL 94V-0)			
Weight		4.2		g
Dimensions (L x W x H)	0.77 x 0.39 x 0.49 inches (19.50 x 9.80 x 12.50 mm)			
MTBF	19 360 000 hrs (MIL-HDBK -217F, t \pm +25°C) / Full Load			
Creepage & clearance distance	Minimum of 5 mm			

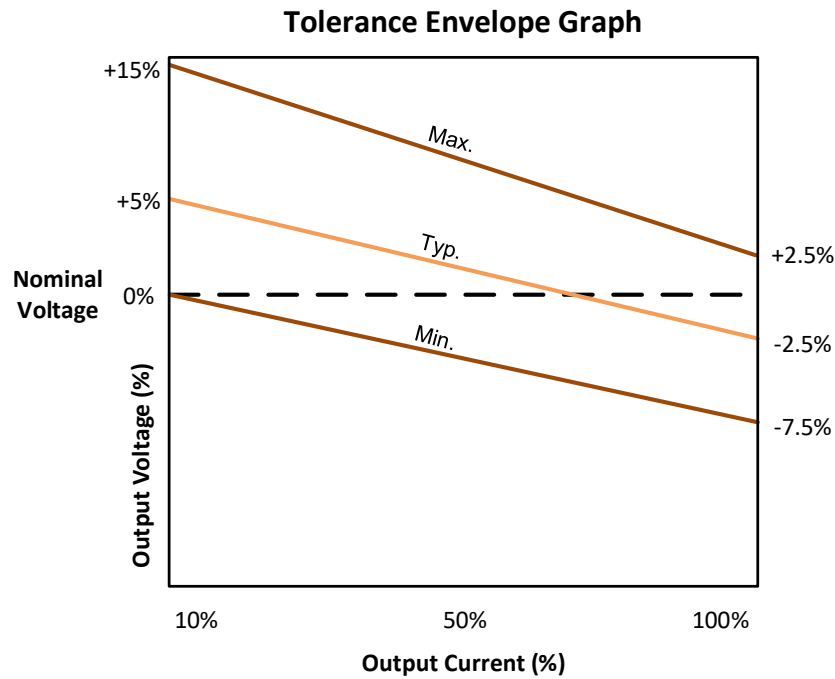
NOTE: All specifications in this datasheet are measured at an ambient temperature of 25°C, humidity<75%, nominal input voltage and at rated output load unless otherwise specified.

Safety Specifications		
Parameters		
Standards	Designed to meet UL/EN/ES 61010-1	
	Information technology equipment	Designed to meet IEC/EN 62368-1
	EMC - Conducted and radiated emission	CISPR32 / EN55032, class B with the recommended EMI circuit EN60601-1-2/CISPR 11 class B with the recommended EMI circuit
	Electrostatic Discharge Immunity	EN60601-1-2 (IEC 61000-4-2)

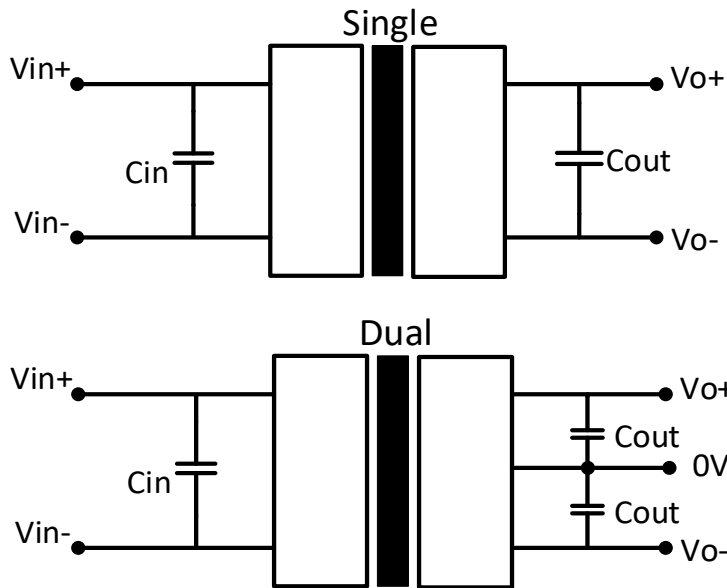
Derating



Output voltage tolerance



Typical application circuit



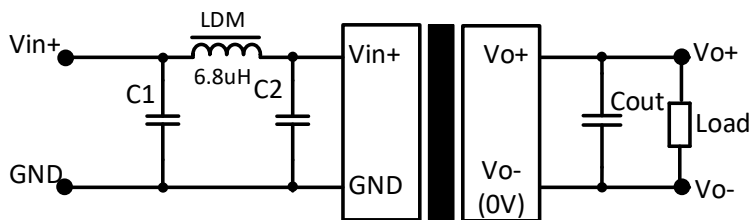
V_{in}	C_{in}
5VDC	4.7 μ F/16V
12VDC	2.2 μ F/25V
15VDC	2.2 μ F/25V
24VDC	1 μ F/50V

V_{out}	C_{out}
5VDC	10 μ F/16V
9VDC	2.2 μ F/25V
12VDC	2.2 μ F/25V
15VDC	1 μ F/25V
24VDC	1 μ F/25V

Dual V_{out}	C_{out}
$\pm 5/\pm 9$ VDC	4.7 μ F/16V
$\pm 12/\pm 15$ VDC	1 μ F/25V

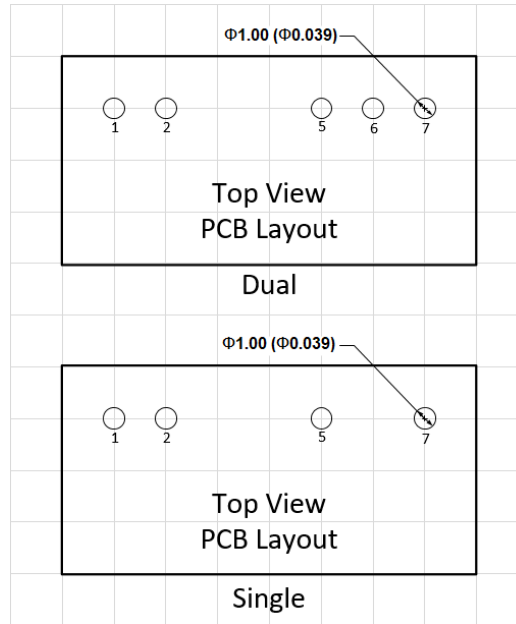
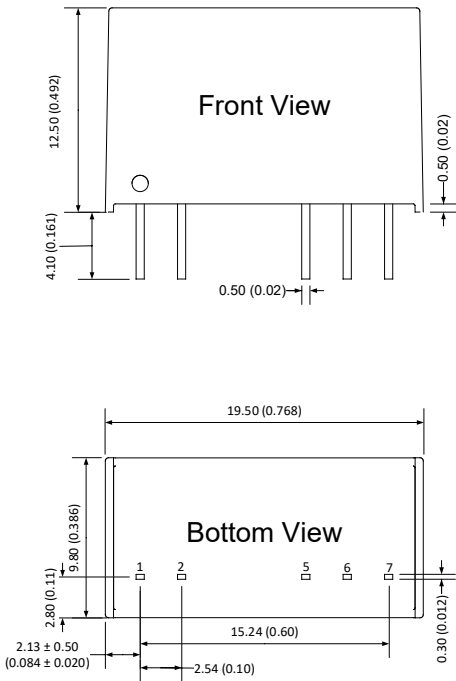
Table 1

Recommended EMI circuit



Component	Input Voltage	5/12/15/24 VDC
	C_1/C_2	4.7 μ F/50V
	C_{out}	Reference C_{out} in Table 1
LDM	6.8 μ H	

Dimensions



Pin Out Specifications		
Pin	Single output	Dual output
1	+V Input	+V Input
2	-V Input	-V Input
5	-V Output	-V Output
6	No pin	Common
7	+V Output	+V Output

Note:

Grid 2.54 x 2.54mm

Unit: mm(inch)

Pin section tolerances: ±0.10(±0.004)

General tolerances: ±0.50(±0.020)

NOTE: 1. Datasheets are updated as needed and as such, specifications are subject to change without notice. Once printed or downloaded, datasheets are no longer controlled by Aimtec; refer to www.aimtec.com for the most current product specifications. 2. Product labels shown, including safety agency certifications on labels, may vary based on the date manufactured. 3. Mechanical drawings and specifications are for reference only. 4. All specifications are measured at an ambient temperature of 25°C, humidity<75%, nominal input voltage and at rated output load unless otherwise specified. 5. Aimtec may not have conducted destructive testing or chemical analysis on all internal components and chemicals at the time of publishing this document. CAS numbers and other limited information are considered proprietary and may not be available for release. 6. This product is not designed for use in critical life support systems, equipment used in hazardous environments, nuclear control systems or other such applications which necessitate specific safety and regulatory standards other the ones listed in this datasheet. 7. Warranty is in accordance with Aimtec's standard Terms of Sale available at www.aimtec.com.